

Musical staff with treble clef and 4/4 time signature. The staff is divided into four measures.

Tablature staff labeled 'TAB' on the left. The staff is divided into four measures.

Musical staff with treble clef. The staff is divided into four measures.

Tablature staff. The staff is divided into four measures.

5

Musical staff with treble clef. The staff is divided into four measures.

Tablature staff. The staff is divided into four measures.

9

Musical staff with treble clef. The staff is divided into four measures.

Tablature staff. The staff is divided into four measures.

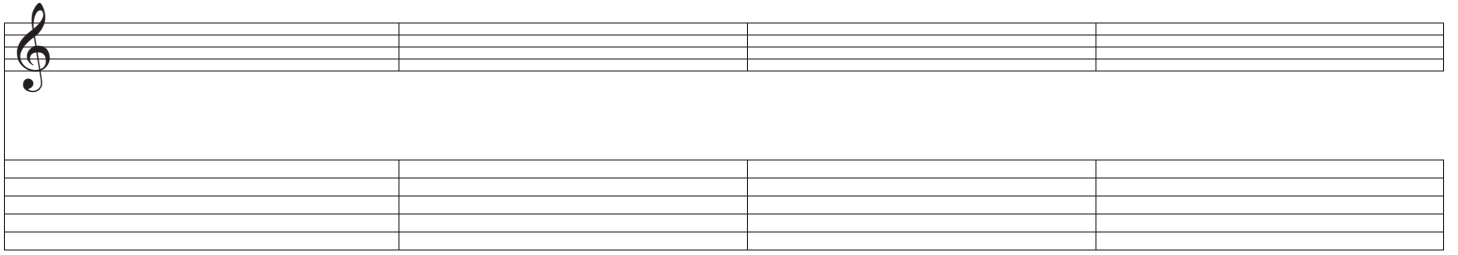
13

Musical staff with treble clef. The staff is divided into four measures.

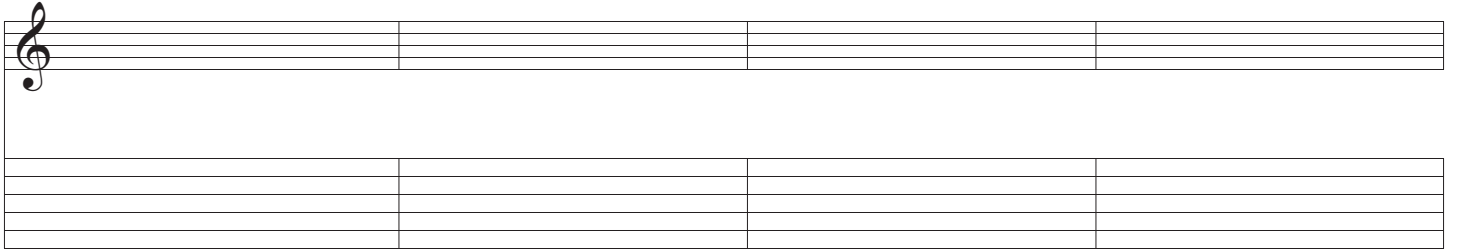
Tablature staff. The staff is divided into four measures.

17

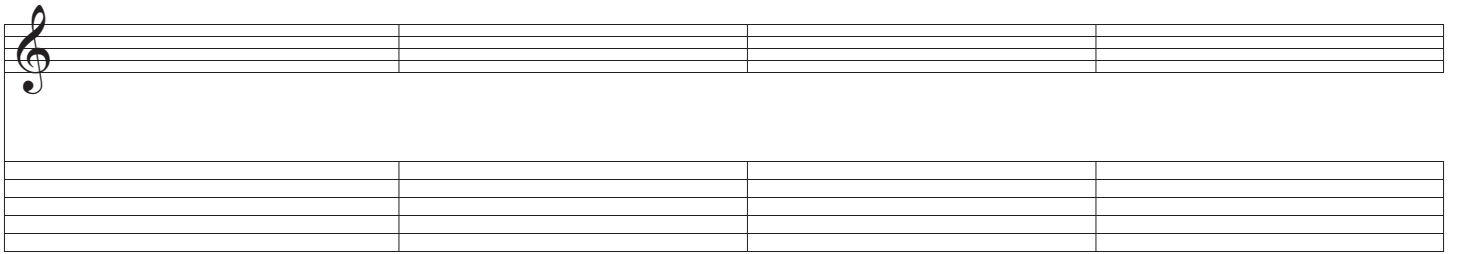
2



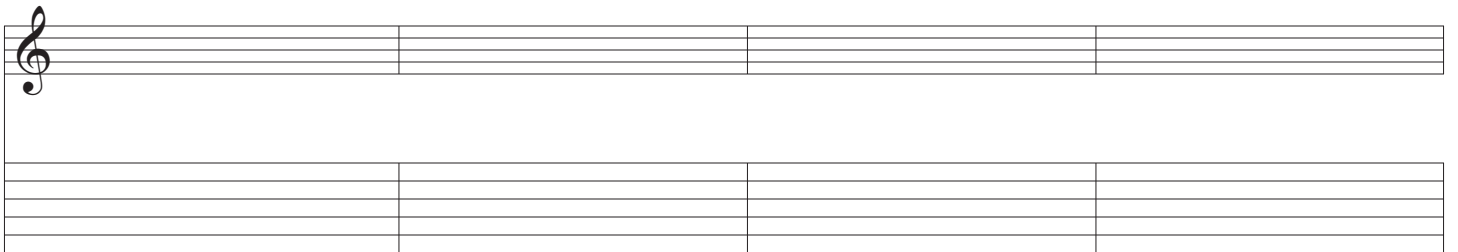
21



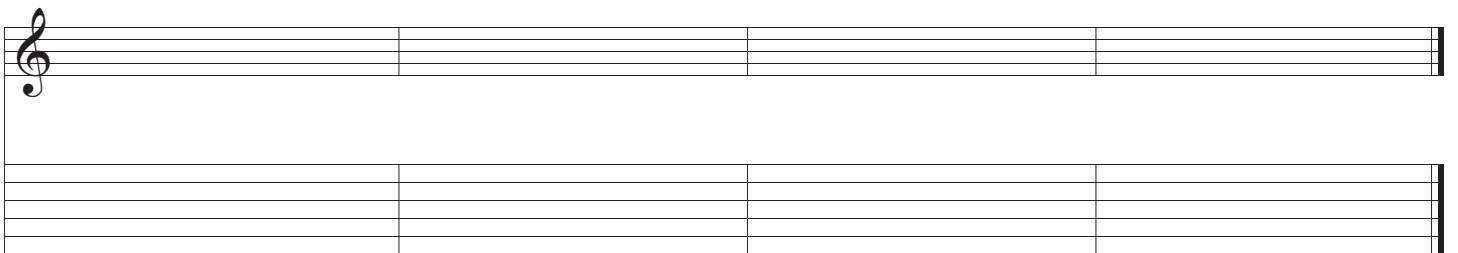
25



29



33



37